





AT A GLANCE. . .

Quick Turnaround

Accurate Parts Mfg Co can produce tooling and first article casting in as little as four weeks, with production runs complete in as little as four weeks following sample approval.



Cost Effective

Accurate Parts Mfg Co engineering and development can save 30 - 50% of your parts costs, while expediting prototype and production. It is very cost effective.

High Tech

Our best assets are high tech equipment and a highly trained workforce which is drawn upon years of know-how to produce even the toughest parts.



QUALITY EXPERIENCE

Quality Of Service And Parts

Quality Control is an integral part of Accurate Part's activities and its commitment to its clients. The company policy is that identified quality issues are corrected at the expense of Accurate Parts. All quality control testing is done before shipment from the manufacturing site and confirmation sampling is done in the distribution center. For this purpose, Accurate Parts maintains a machining capability at the distribution center solely for the purpose of addressing easily correctable issues.

Inspection Reports Include:

- Material Certificates
- Tolerance
- Hardness and Torque
- Plating
- PPAP Testing Certification (Levels 1, 2, 3)
- Torque Certification



Bock
orkholding inc.

KOMA
Precision Inc.





ABOUT ACCURATE

Accurate Parts Mfg. Co.

Accurate Parts is organized to provide all of the requirements necessary to eliminate the challenges of parts supply for its clients. Accurate Parts Mfg Co is rapidly becoming recognized throughout Turkey and the USA as a premier contract manufacturer of precision for all types of casting, forging, gears, laser cutting as well as a complete parts manufacturer for many different industries. At Accurate Parts Mfg Co, we have excelled in the challenges of today's rapidly changing manufacturing marketplace by continuous improvements in processes, capabilities, quality control, engineering and productivity. We can meet your most demanding applications from short runs to high volume which require immediate delivery of JIT components with using methods such as KANBAN systems of blanket order systems in which we would warehouse products in our Bensenville facility. We are a full service manufacturing company with many capabilities here in the USA and in Turkey.

CAPABILITY

Accurate Parts is equipped with modern machine tools carefully selected for their efficiency and accuracy, we have the following types of machines.

CNC 4-Axis Milling Machines



CNC 5-Axis Milling Machines



CNC Lathe Machines



CNC Surface Grinding



CNC Precision Wire Cut



CMM (Coordinate Measuring)





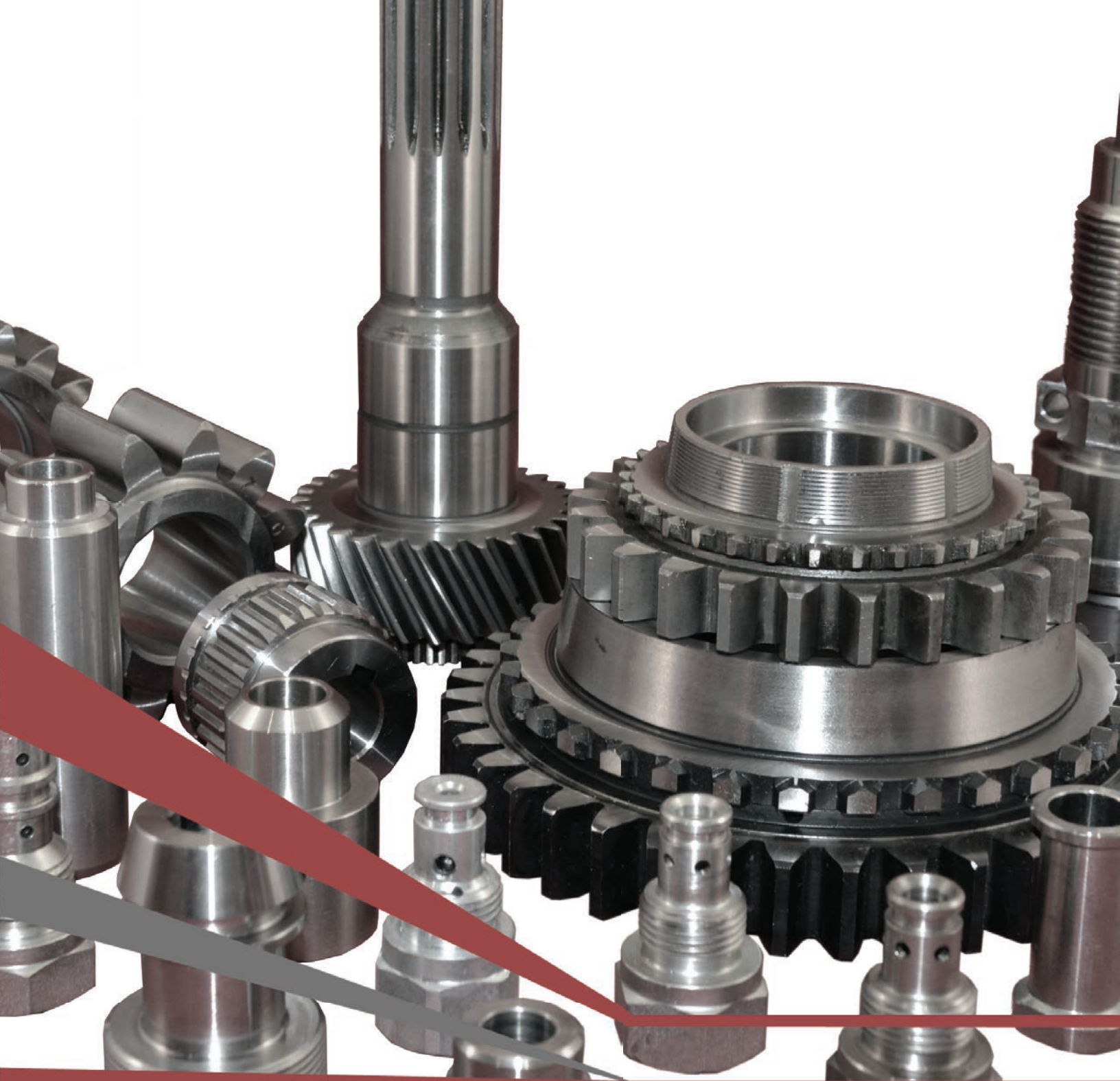
WHY US

Clients benefit by lowering the over-all demands and costs of their parts sourcing activity while maintaining quality and certainty of supply. This approach creates efficiencies in:

- Time spent managing the supply chain
- Engineering
- Manufacturing
- Quality control
- Inventory management

Using 152 pieces of capital equipment, we do:

- Gear cutting and grinding
- Hobbing
- Surface Grinding
- Machining
- Turning



We produce metal parts of the highest quality,
functionality and cost effectiveness.



ANY TYPE OF PARTS?

Accurate Parts has provided to its customers parts with high quality and competitive price for many years. In Turkey with our 50,000 sq ft facility and with our prospective manufacturing partners, we can manufacture almost any type of parts with methods like; **die casting, sand casting, investment casting, forging, machining, fabrication, laser cutting, welding** and we can fully perform any type assemblies.

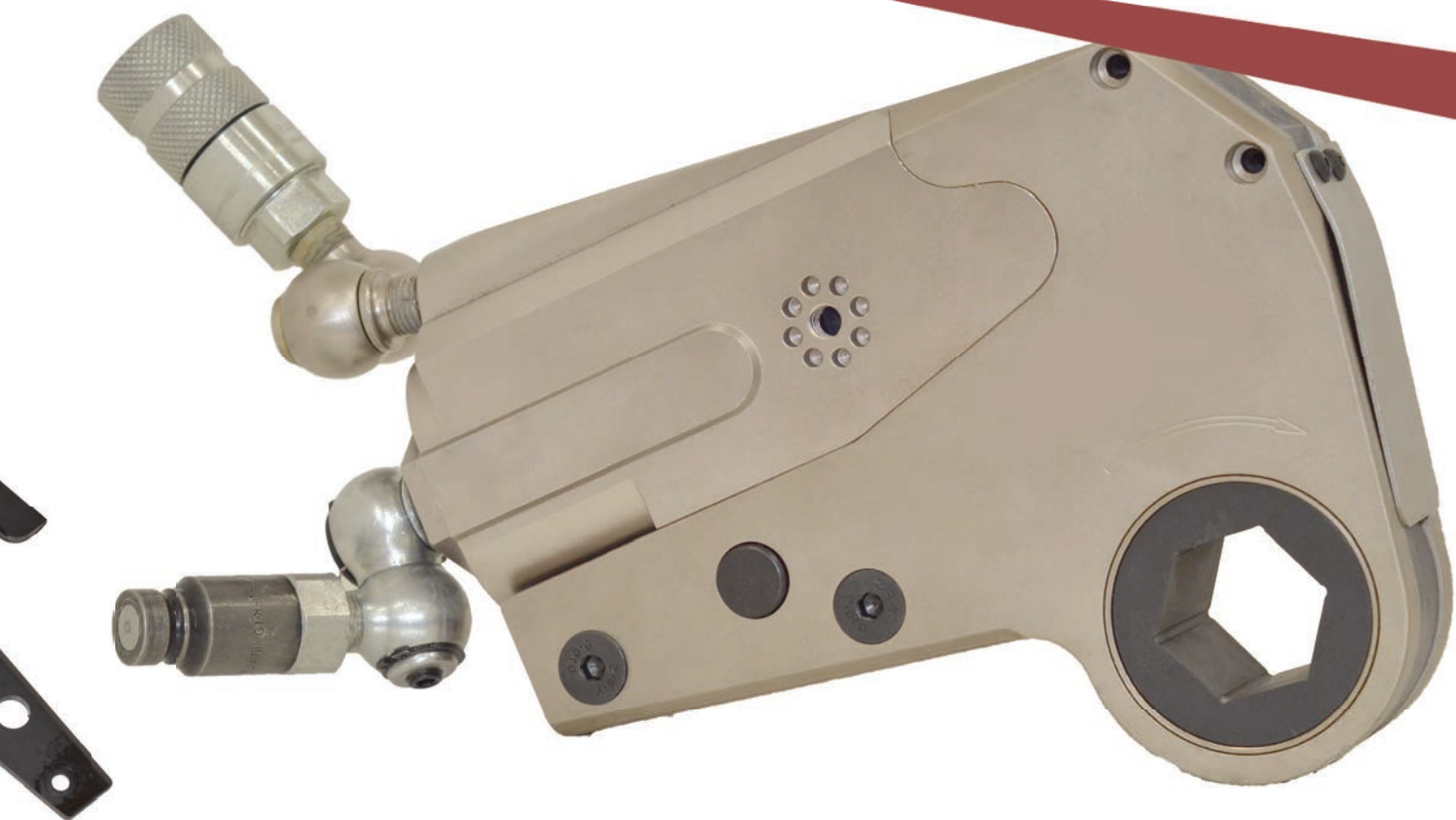
Products we have supplied have been used in metallurgical equipment, mining equipment, chemical industry equipment, machine tools, wind mill industry equipment, heavy hoisting equipment, general equipment and in other industries not listed here. We can be your reliable one and only parts manufacturer from US and overseas.

TORQUE WRENCH **APX** LOW PROFILE SERIES



FEATURES

The ATX Low Profile Hydraulic Torque Wrench works directly on the nuts and is able to fit into narrower places. The ATX covers nut sizes from S19 to S175. For ease of use, the hexagon cassette is interchangeable to accommodate different sizes for multiple situations.



FEATURES

The ATX is made with ease of use in mind and offers many clear benefits for the user and application:

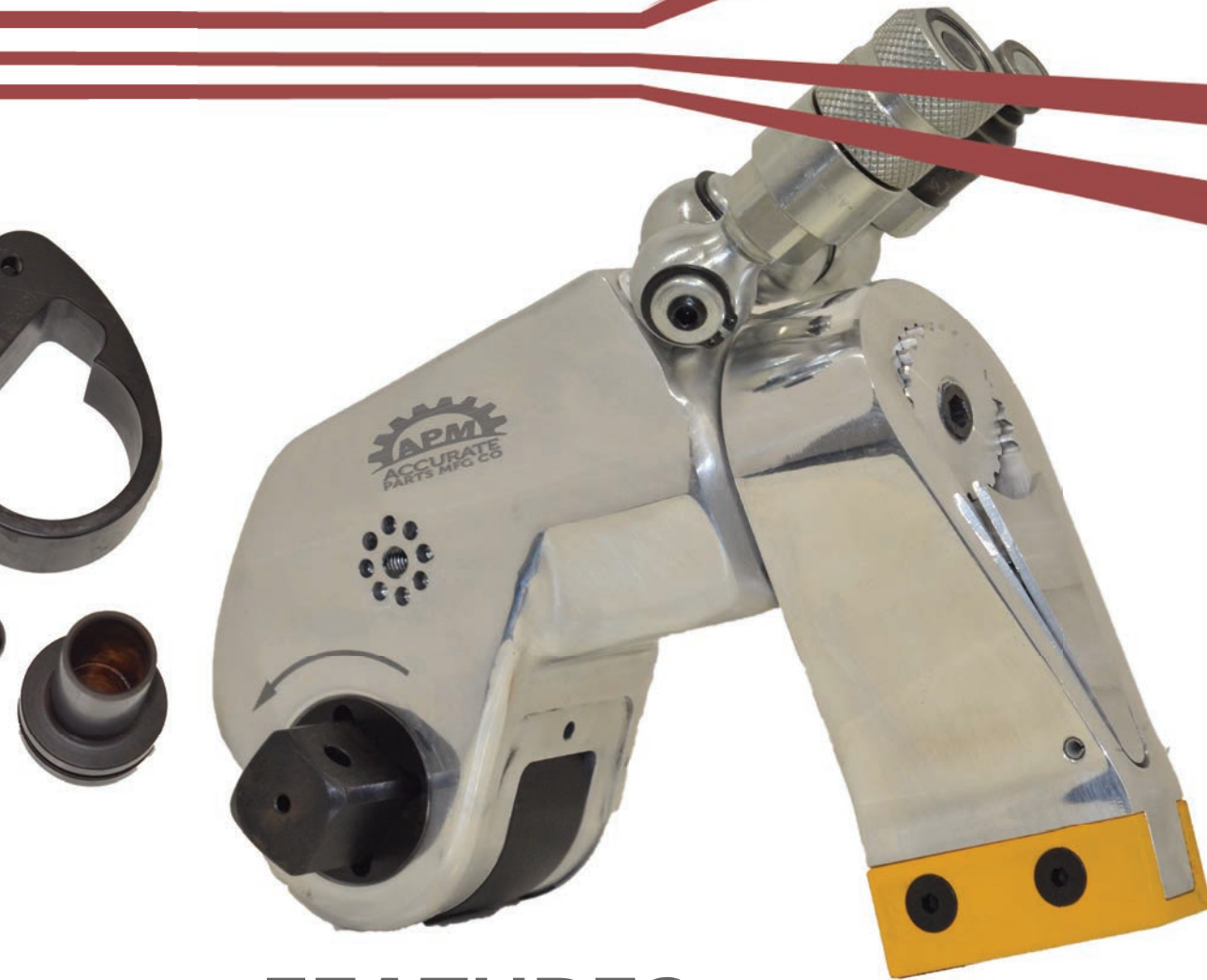
- In-Line Reaction Pad
- 360 ° Swivels
- High Strength Body
- Non-Drip Quick-Connect Couplers
- Hands-Off use

TORQUE WRENCH ASD SQUARE DRIVE SERIES



FEATURES

The ASD Square Drive Hydraulic Torque Wrench is from a aluminum-titanium alloy which allows for the tool to be light and handle high-intensity loads. It is the preferred tool of choice on applications from every industry ranging from petrochemical plants to the windmill industry.



FEATURES

The ASD is made with ease of use in mind and offers many clear benefits for the user and application:

- Multi Tooth Ratchet Assembly
- 360 ° Swivels
- Mono Body Housing
- Non-Drip Quick-Connect Couplers
- Hands-Off use

STRAPPING TOOLS MANUAL & PNEUMATIC

COMPLETE TOOL & PARTS

Accurate Parts has the capability to manufacture parts and assemble them to form complete strapping tools that are branded made in USA. We offer a wide selection of tools from simple manual cutters and tensioners to pneumatically powered combination tools.



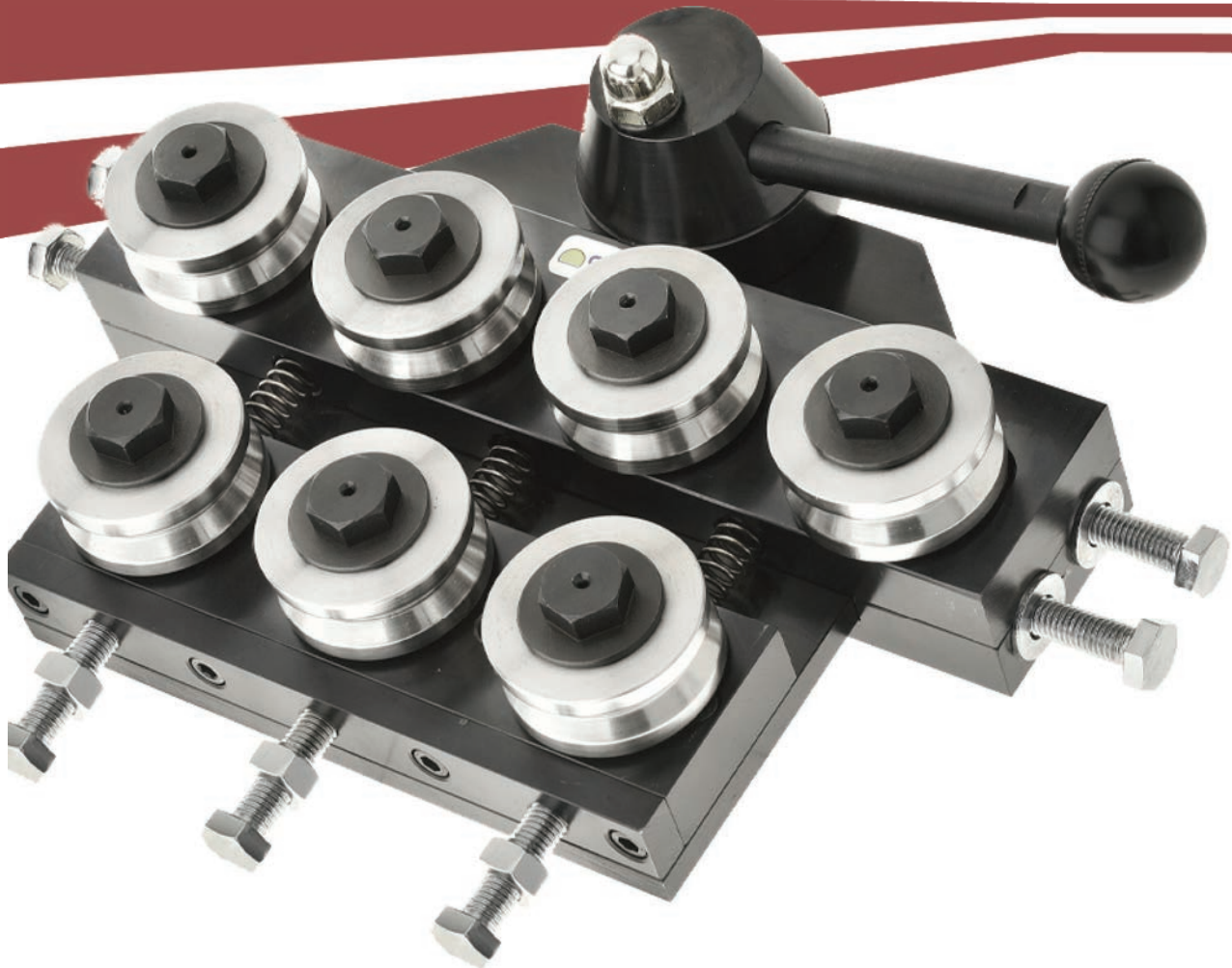
FEATURES

Strapping sealers provide positive sealing action with very low effort required. They lock strap ends onto high strength joints while cutters remove excess strapping material.

Combination tools differ by having the function of tensioner, sealer and cutter all in one and save time by eliminating the handling of separate tools.

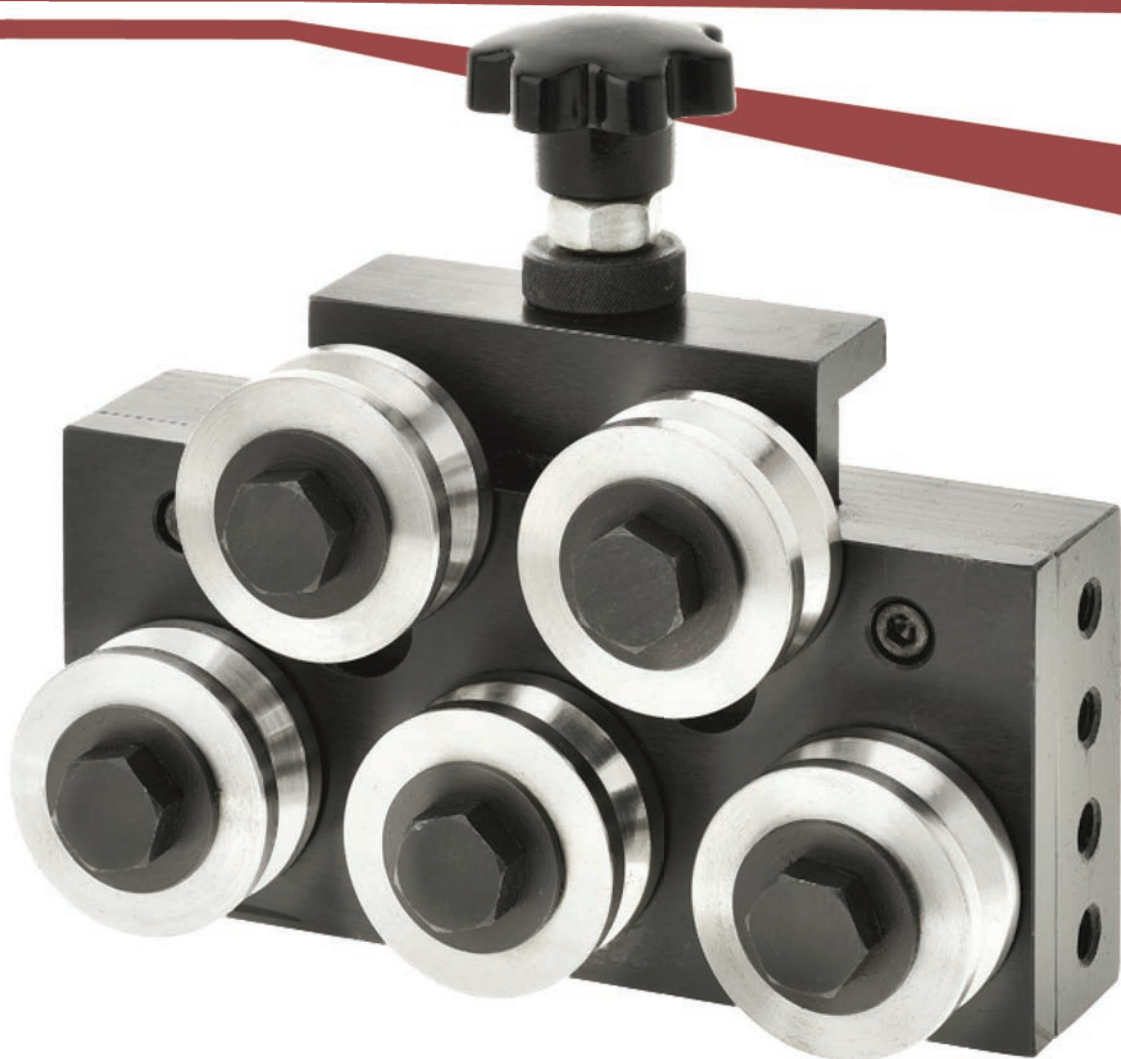


Wire Straighteners



FEATURES

Straighteners are made to order and can be customized with a set number of rollers. Material diameters can range from 0.5 mm to 40 mm. Accurate Parts Straighteners are made using precise engineering and manufacturing and will satisfy all production needs.





US Headquarters

Accurate Parts
Manufacturing Company

220 Gateway Rd
Bensenville, IL 60106
Tel: +1 (630) 616 4125
Fax: +1 (630) 616 4126
info@accurateparts.net

Turkey Office / Factory

Guroz Metal & Plastik Paz. Tic. Ltd.
Stl

G.O.P Mah 21 Sokak No:14 Cerkezkoy /
Tekirdag / Turkiye
Tel: +90 (282) 726 3401
Fax: +90 (282) 726 3416

Germany Office

Accurate Parts
Manufacturing Company

Widhalmstrasse 26, 90459
Nurnberg, Germany
Tel: +49 (0) 160 / 92 404
886
info@accurateparts.de



www.AccurateParts.net